



easytech  
by  PRIM

# Physiotechnology

Efficient treatments for a **faster** recovery

# PHYSIOTECHNOLOGY IS THE FUTURE

## Revolutionize your health from prevention to performance

- **EASYTECH IS THE PERFECT PARTNER** to “revolutionize” your clinic and provide you with the most exclusive and up-to-date devices on the market.
- **EASYTECH CAN COUNT ON A NATIONAL NETWORK OF EXPERTS IN PHYSIOTECHNOLOGY** to personally take care of you, our client, and assist you during every step of the decision-making process.
- **EASYTECH PROVIDES EDUCATIONAL PROGRAMS DEVELOPED TOGETHER WITH PRIM ACADEMY SPAIN**, including a vast array of courses in all fields, topics, and physiotherapy-related products, developed on the Spanish model of our partner Prim.
- **EASYTECH OFFERS HIGH-CLASS TECHNICAL SERVICES**, we guarantee an immediate response, both online and in presence, and the fastest delivery of required spare parts.

## TRUST US

- We have more than 25 years of experience in developing advanced technology.
- A national network of experts to personally take care of you and your clinics.
- We are both manufacturers and distributors of the main national and international physiotherapy brands.





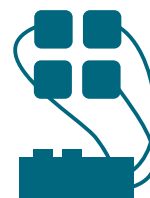
**Easytech works with a partner of excellence, PRIM.es, the number 1 retailer in both Spain and Portugal for medical and paramedical products.**

As a professional, you will have all the help you need. The new model for a physiotherapeutic clinic that we suggest, is built around three main areas:

## **THERAPEUTIC AREAS**



**Prevention**



**Treatment**



**Recovery**



## PREVENTION

Human beings are naturally designed for physical activity and movement. The evolution of technology must prioritize its application for the benefit of people, considering their needs and well-being anytime.

# Nordic hamstring

## ◀ N3 device

N3 is a portable device designed to facilitate Nordic Hamstring exercise and to measure eccentric and isometric knee flexors strength. With N3, it is possible to train independently, perform the Nordic Hamstring exercise correctly, and measure the strength of the posterior thigh muscles while monitoring their progress with a dedicated biofeedback. In addition, the software's user interface allows for quick reading of performance parameters for the individual athlete and the entire team. N3 is designed to be folded up and easily transported with the included trolley-bag, so as to facilitate its use in the most diverse areas of training.



# Auxotonic work

## Flextensor ▶

Flextensor is an elastic load equipment designed to tone and train the muscles of the lower limbs by means of an Open Kinetic Chain.

The specific design and flexibility of the load enable the execution of exercises at variable angular speed by avoiding the PNF stretching principle of successive induction.

Furthermore the elastic resistance load it's adjustable both for extension and flexion exercises to guarantee great versatility of use.



## Vector ▶

Vector is an elastic load equipment designed for rehabilitation and training the muscles of the lower limbs in Closed Kinetic Chain.

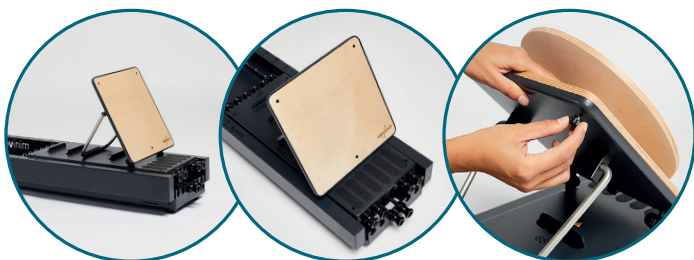
This exercise modality entails muscle activation in co-contraction (of both agonist and antagonist muscles) and produces positive results for the stability of joints and proprioceptive stimulation. The specific technological features of the device make it suitable for the simulation of specific technical movements and of controlled-load plyometric work.



## Minivector ▼

Minivector is a compact and small device designed for the recovery of movement and the toning of the muscles of several anatomical districts like the upper limb, lower limb, and core.

Easy to set up and transport, Minivector is an elastic resistance tool suited for both gym and home treatments.



# Isoinertial work

## Conic Pro ►

Designed to train direction and orientation changes with intensity.

This device is designed to train direction and orientation changes with intensity. The conical axis, with a large proportion between the minimum and maximum diameters, generates high accelerations in the concentric phase, which we then have to manage and brake at the beginning of the eccentric phase with high intensity.

- Designed for total movements and displacements, improves braking ability in direction changes.
- Acceleration adjustment through the axle radius.
- Adjustment of moment of inertia through masses built into the disc, each of which represents 30% of the moment of inertia.
- Adjustment of rope exit height.
- Anchorage for vertical pull.



## ◀ Squat

Prim Squat is a fixed radio device to train in the eccentric and concentric contraction of your lower limbs. The fixed radio device for lower body braking and pushing is based on the squat movement and its vertical pull variations.

Fixed radio devices maintain the same axis throughout the whole movement, consequently, all the acceleration changes on the device depend on how much strength the athlete is able to apply in that movement.

- Designed to improve the ability to accelerate and brake based on the squat and its variations.
- 1x2 reduction in transmission ratio to increase tension during movement execution.
- Adjustment of the moment of inertia through the masses built into the disk, each of which accounts for 10% of the moment of inertia.
- Quick adjustment of rope movement.
- Adjustable harness.



## ⋮ TREATMENT

The world of physiotherapy is changing. Specializations and advanced technology are emerging and slowly changing this sector. Just like in the medical world, technology is changing the way we treat pathologies and injuries thanks to more precise diagnostics, efficient treatments and faster recovery times.

# Thermography

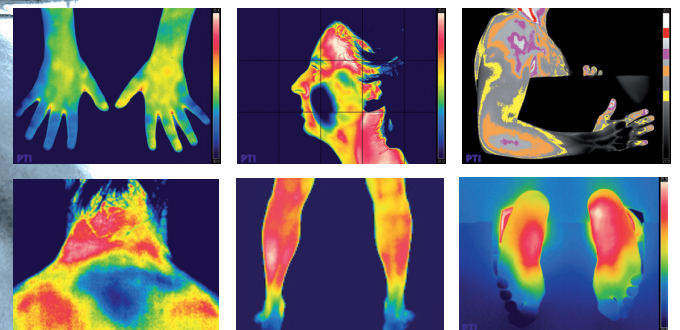


## ▲ Tcell System

Device for the monitoring of physiological and physiopathological processes through temperature changes. It allows real-time assessment and prevention of pathologies and accurate treatment monitoring.

This device is specifically designed for physiotherapy, particularly for:

- Sports assessment and prevention
- Planning treatments and recovery
- Localization of the points to perform targeted interventions on patients



# Invasive Physiotherapy

## Physio Invasiva 2.0 ▶

Physio Invasiva 2.0 is a versatile device combining the most effective and innovative electric currents in the field of percutaneous electrical stimulation.

Designed for applications in both hospital and outpatient settings, Physio Invasiva works by applying percutaneous electric currents such as galvanic, PES, PES 2.0, microcurrents and TENS. This device is particularly suitable to precisely and locally treat tendinopathies and any type of disorders of the musculoskeletal system.



# Physiotherapy

## ◀ Hyperthermia Delta

Delta device is particularly suitable to control temperature and the depth of work on the patient.

- A combination of endogenous source, generating electromagnetic waves, and exogenous source for the thermoregulation of surface layers
- Thermometric system for therapeutic temperature control
- Maintaining a stable hyperthermic condition for the entire duration of the treatment
- Measurement and control of the given energy
- Homogeneity of heating of the affected area
- Independence from the operator during the application of the treatment
- Repeatability of treatment conditions
- Preset and manually customizable protocols





## ▼ Tecartherapy

The T Care line identifies a range of instruments for Capacitive and Resistive Diathermy declined in different models, each designed to best meet the needs of the individual user.

A wide range of accessories combined with the experience of the operator transform the treatment with T Care into a real method to enhance functional recovery.

T Care  
Compact / XP



T Care  
Plus



T Care  
Plus Vag





### Cryotherapy Cryo T ►

Portable cryotherapy for fast and safe cold treatments.

- High thermal conductivity applicator
- Measurement and monitoring of the treatment temperature.
- Cooling system by Peltier effect
- Applicator temperature range from +2°C to +10°C
- Preset mode menus
- Easy-to-use cold, without ice storage problems
- Touch screen display
- Reduced dimensions and weight, easy to transport



A woman with long brown hair, wearing a brown zip-up jacket with teal accents and white earbuds, is stretching her arms across her chest. She is smiling and looking upwards. The background is a soft-focus sunset over a body of water. The image is framed by abstract, energetic brushstrokes in white, orange, and teal.

## RECOVERY

By taking advantage of current technological progress, post-workout recovery processes can be greatly optimized. The application of specialized technology will stimulate the production of internal antioxidants, thereby reducing inflammation and accelerating cellular repair.

These innovations in physical recovery will enable athletes and fitness enthusiasts to maximize performance and minimize downtime, providing a more functional approach to overall the well-being.

# Physical activity



## ◀ Electronic balance board Libra

Libra stimulates proprioceptive balance and neuromuscular coordination, making it one of the most powerful devices for muscle strengthening and prevention.

- Variable tilting radius
- Non-slip surface for mono and bipodalic work
- Software with archive and protocols
- Motivational graphic and acoustic feedback
- Performance Index and Video Games
- Comparison between the exercises
- CDG test (ankle stability test)
- SDG test (global balance test)



## Smart Bike ▶

A device for physical activity, it is similar to a bike, you can ride it without moving and it is used mostly to do cardiovascular exercise, to improve resistance, to tone up muscles and to promote coordination and balance.

- Pulse measurement by built-in contact sensors for a comfortable and immediate reading;
- 12 predefined training programs with 16 intensity levels and 4 user-customizable programs;
- Bluetooth connection to the main apps of the field as ZWIFT, KINOMAP, BESTCYCLING, WAHOO SYSTM and BKOOL.



Single-joint device



## ◀ Genu Iso, Genu Plus

Isokinetics is an established methodology in the field of rehabilitation for evaluating and increasing the strength and resistance of muscle groups during functional movement.

Thanks to our devices, the movement is executed at a constant speed in which the resistance adjusts to oppose the force exerted by the user. The result is a maximal muscular contraction continuing for the entire duration of the exercise and extending to all degrees of joints.

Genu Line devices are particularly effective for joint traumatology treatments, postoperative care, injury prediction and post-rehabilitative control tests.

The ease of use and the focus on the knee joint make the devices a flexible tool both in sport and rehabilitation.

Multi-joint device



## ◀ Prima Iso, Prima Plus

Prima Plus is designed for the training of the large joints: knee, shoulder and ankle.

For each large joint Prima allows:

- The assessment and recovery of joint strength and range
- The monitoring and restoration of dynamic muscle performance
- The accurate and repeatable identification of a painful or hypovalid joint arch for the customization of workloads

Prima Line devices also find useful applications in muscle and joint traumatology, postoperative care and in the athletic training of the healthy subject.



# Hyperbaric Chambers



## Hyperbaric Chamber 90W

Equipped with a control panel, the device offers all functions for safety control and monitoring of the unit, with a simple and user-friendly design. Through a transparent acrylic sliding window, which offers great visibility, the equipment can be accessed and the patient can be observed during treatment.

It is available in different finishes and interior and exterior color variants of the user's choice.

### Technical features:

- manual or automated program treatment system
- internal and external control panel with all functions
- patient communication and monitoring system
- TV for patient entertainment
- oxygen level and flow indicator
- Programmable and tactile treatment monitor
- BIBS mask
- BIBS air supply pressure, BIBS oxygen administration pressure, BIBS air administration meter
- BIBS pressure mask
- Chamber pressure indicator
- Control valves: chamber pressurization valve, chamber exhaust valve, chamber air delivery valve, chamber oxygen supply valve.
- Working pressure: 1.5 or 2.0 ATA
- Working temperature: 5 to 50 °C
- Gas feeding pressure: 50-70 psig
- Approximate weight: 250 kg
- Width of the couch: 660mm
- Length of the couch: 2130mm
- Maximum patient weight: 150kg
- Inner diameter of the acrylic cylinder: 900mm
- Length of acrylic cylinder: 2200mm
- Height: 1.4m
- Weight: 250 Kg

## Physiological effects



Repair of  
peripheral  
neuronal fibers



Angiogenesis



Stimulation of  
collagen  
synthesis



Bactericidal  
activity



Regulation of  
oxidative stress and  
inflammatory  
response



Increased cerebral  
blood flow and  
neuroprotection



Osteogenesis



Decreased  
ischemia  
reperfusion  
injury



Analgesic  
effect

# Pressotherapy

## Sport Press ▶

Sport Press is an air compression 4 chambers device intended to temporarily relieve muscular tension and increase blood circulation to obtain a rapid recovery in the desired areas.

Ideal for post-effort recovery. Allows to treat and relax the muscles of more than one limb simultaneously.



two sections  
treatment table



three sections  
treatment table



## Treatment tables ▶

Hydraulic and electric two or three sections treatment tables for medical examination.

Practical and easy to set up, developed especially for examinations, treatments and massages. Designed to perfection to guarantee your patients maximum comfort during therapy.

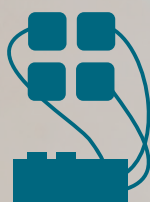
# Physiotechnology

*taking care of yourself is easy*

## THERAPEUTIC AREAS



Prevention



Treatment



Recovery

**Do you want to learn more about our offers?**  
**Visit our website and discover all the details on our technologies.**

**[www.easytechitalia.com](http://www.easytechitalia.com)**

[info@easytechitalia.com](mailto:info@easytechitalia.com)

(+39) 055 8455216



Via della Fangosa, 32  
50032 Borgo San Lorenzo  
Firenze - Italia



C/ Yolanda González, 15  
Pol. Ind. N° 1  
28938 Móstoles - Madrid